

Medical & Display Equipment Casters



Available in North America from:





Medical & Display Equipment Casters Engineered for Excellence

A Colson Associate company, Revvo Caster announces the introduction of the Colson Europe range of medical and display equipment casters to its line of casters and wheels for commercial, institutional, and industrial applications.

Colson Europe medical casters from Revvo are engineered to offer versatility and provide ergonomic performance. Requiring only minimal maintenance to help ensure a long service life, Colson Europe medical casters from Revvo are manufactured from the highest quality materials under rigorous quality control standards.

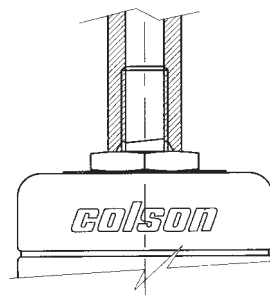
Featuring distinctive, attractive design styles, the line of PlasTech, TwinTech, and SingleTech casters are ideal for hospital beds, anesthetic, diagnostic, and treatment equipment, medical carts, and a wide range of associated furniture, displays, and appliances.



Contents	Page No.
Technical Reference	1
Design & Performance Standards	2
Combi Overview	3
Combi Accessories	4
PlasTech Solus	5
PlasTech Solus Top Plate	6
TwinTech Solus	7 - 8
TwinTech Combi	9 - 11
TwinTech Combi Plunger Lock	12
SingleTech Solus	13 - 14
SingleTech Combi	15 - 17

Technical - Correct Mounting

To ensure correct mounting and eliminate possible fatigue on the mounting pins, the pin **MUST** be screwed home - making full face contact with the shoulder and the recommended torque applied. In addition, to aid secure mounting, it is recommended that a suitable locking compound be used. For further information, please contact our technical department.



Tire Performance	Rubber	Polyurethane
Swivel Effort	Good	Excellent
Starting Effort	Very Good	Excellent
Rolling Effort	Very Good	Excellent
Threshold Resistance	Excellent	Very Good
Low Noise	Excellent	Good

Swivel	
Size	Torque
M8	7.4 Lbft
M10	14.8 Lbft
M12	28.0 Lbft
M14	40.6 Lbft
M16	66.4 Lbft



Design & Performance Standards

PlasTech

Constructed of high-performance thermoplastics, the PlasTech range of swivel casters includes stem, low-height, and top plate styles. Wheel diameters are offered in 4" and 5" with load capacities of 176 and 220 lbs. Ergonomic and attractively styled, PlasTech casters are ideal for a variety of applications including:

- Home and office furniture
- Medical equipment
- Promotional display units
- Catering appliances
- Distribution trolleys

See pages 5-6



TwinTech

Featuring soft, streamlined contours, TwinTech casters combine quality and comfort into an economical and durable range of casters. Constructed of lightweight, diecast aluminum, TwinTech casters are easy to clean and require minimal maintenance for a long service life.

They are engineered to reduce swiveling and pushing effort necessary in demanding applications. Low-height and low-offset designs provide increased stability, and the twin-wheel style enhances maneuverability and precise tracking.

TwinTech Solus swivel casters are offered in wheel diameters of 3", 4" and 5" with load capacities from 198 to 297 lbs. TwinTech Combi swivel casters, for use in sets, are offered in 5" and 6" wheel diameters with load capacities from 198 to 330 lbs.

See pages 7-12



SingleTech

Featuring a robust, single-wheel design, the SingleTech range provides outstanding versatility for color-coordination between the casters and your medical or display equipment. They offer many design and engineering advantages of TwinTech casters including streamlined contours, minimal swiveling and pushing effort, low maintenance requirements, and lightweight, yet durable diecast aluminum construction.

SingleTech Solus swivel casters are offered in wheel diameters of 4" and 5" with load capacities from 198 to 297 lbs. SingleTech Combi swivel casters, for use in sets, are offered in 5" and 6" wheel diameters with load capacities of 198 to 330 lbs.

See pages 13-17



TwinTech & SingleTech Combi Overview

Locking a Set of Casters Simultaneously

The Combi style of TwinTech and SingleTech casters is the preferred choice when all casters in a set need to be locked simultaneously. They offer a clean, streamlined appearance and exceptional mobility and tracking performance. Combi casters feature a fully-enclosed, positive mechanical brake and locking system.

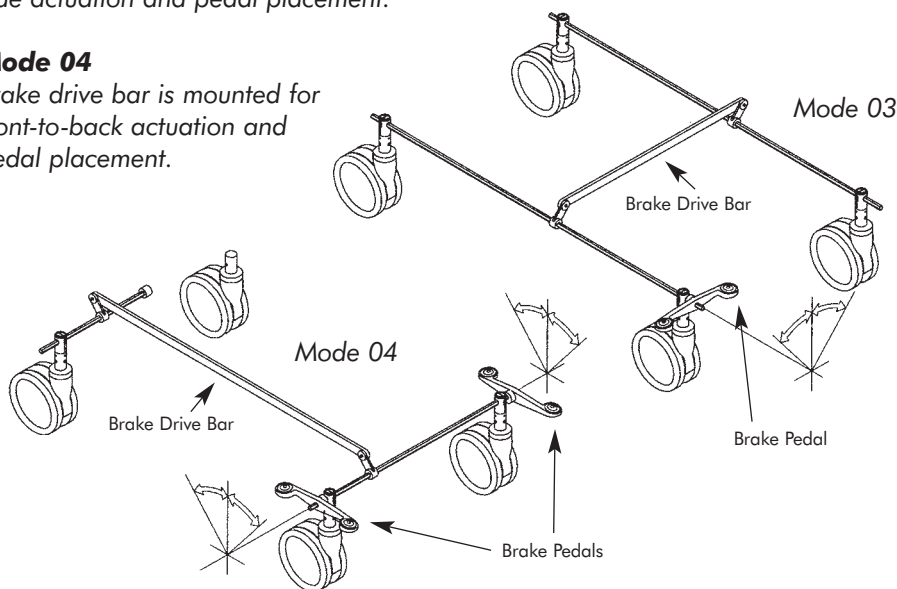
A variety of caster sizes, colors, and tires are available, and there are virtually unlimited configurations that can be accommodated. Typical Combi caster layouts are shown below; however, many other systems can be designed using this versatile system. Contact us for assistance.

Mode 03

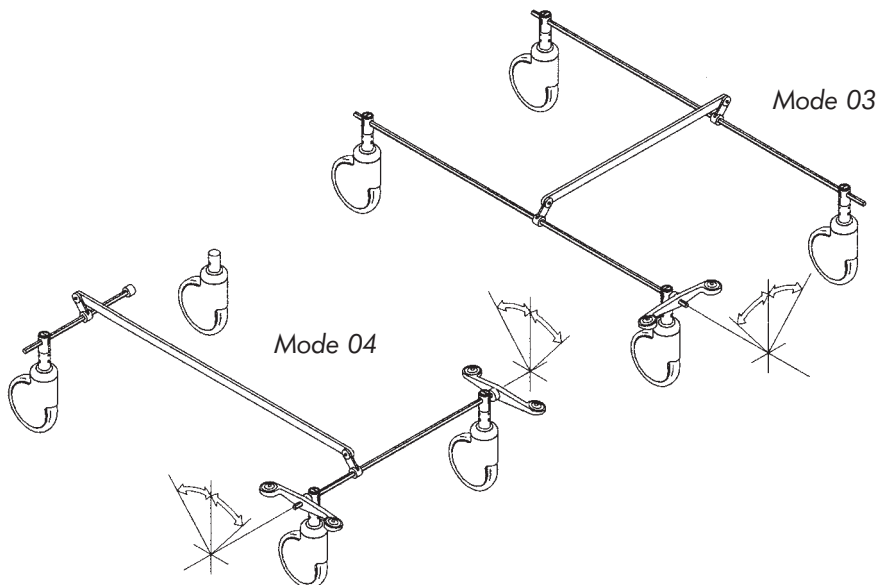
Brake drive bar is mounted for side-to-side actuation and pedal placement.

Mode 04

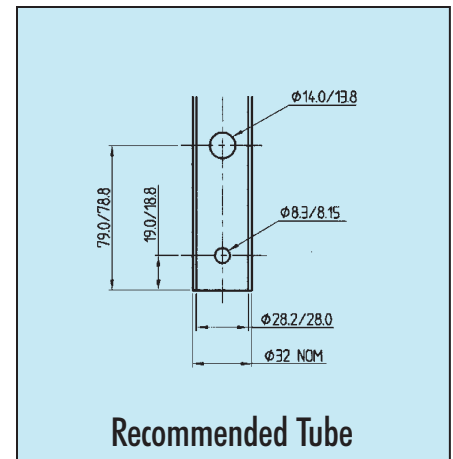
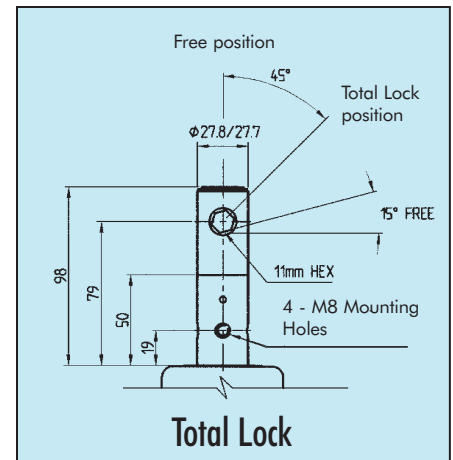
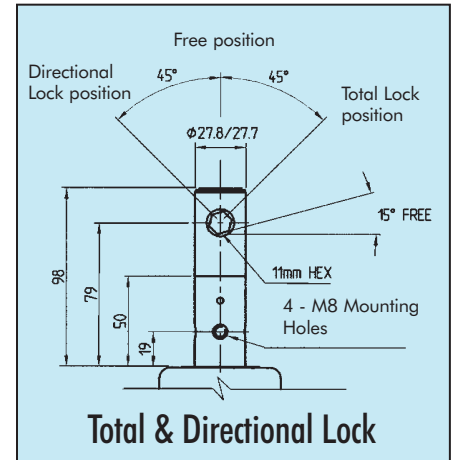
Brake drive bar is mounted for front-to-back actuation and pedal placement.



Typical configurations for TwinTech Combi casters



Typical configurations for SingleTech Combi casters



Note: Dimensions shown in mm. Consult factory for English/Imperial ordering dimensions and quantities.

See pages 9 - 12 for specifications on the TwinTech Combi.

See pages 15 - 17 for specifications on the SingleTech Combi.

Combi Accessories

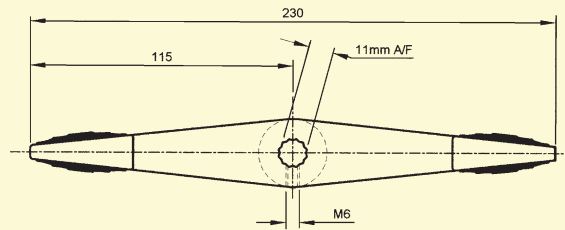
A variety of accessories are available to enable TwinTech and SingleTech Combi Casters to be integrated easily into the design of your equipment. Double or single-action universal pedals (no need for left or right-handed models), together

with linkages, can be supplied for actuation by an 11mm A/F drive bar activated from a central point. Material: zinc alloy. Finish: chrome-plated.

Note: dimensions below in mm.

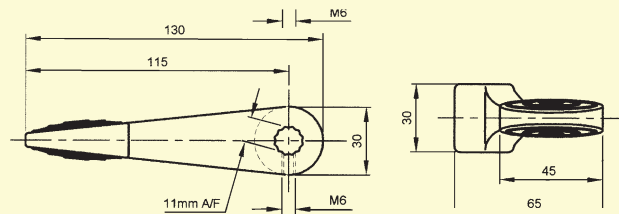
Double Pedal Model #CPD01-00

Complete with M6 x 10 grubscrew



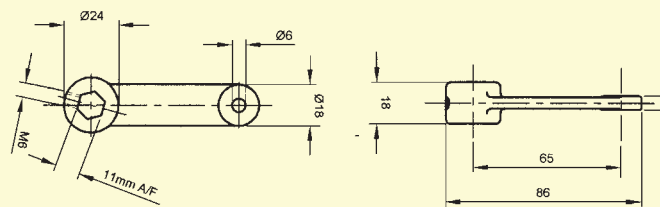
Single Pedal Model #CPS01-00

Complete with M6 x 10 grubscrew



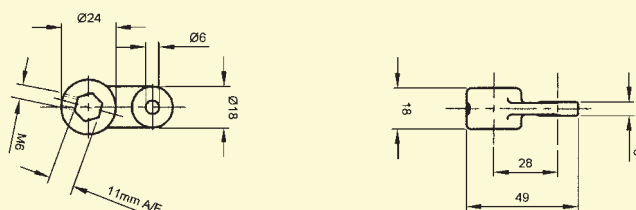
Linkage (long) Model #CLL01-00

Complete with M6 x 6 grubscrew



Linkage (short) Model #CLS01-00

Complete with M6 x 6 grubscrew



PlasTech – Solus Swivel Casters

PlasTech Solus Low Height

Type	Wheel Dia.	Load Capacity	Bearing	Wheel Type	Stem Size	Weight	Part Number
Swivel	4"	176 lbs.	Ball	Gray Polyurethane	M10 x 8	1.0 lbs.	42-4534-404-130-0001-0800
Swivel	4"	176 lbs.	Roller	Gray Polyurethane	M10 x 8	0.8 lbs.	42-4534-401-130-0001-0800
Swivel	5"	220 lbs.	Ball	Gray Polyurethane	M12 x 15	1.7 lbs.	42-5534-404-032-0001-0805
Swivel	5"	220 lbs.	Roller	Gray Polyurethane	M12 x 15	1.5 lbs.	42-5534-401-032-0001-0805
Total Lock	5"	220 lbs.	Ball	Gray Polyurethane	M12 x 15	1.0 lbs.	42-5532-404-032-2001-0805
Total Lock	5"	220 lbs.	Roller	Gray Polyurethane	M12 x 15	0.8 lbs.	42-5532-401-032-2001-0805
Directional Lock	5"	220 lbs.	Ball	Gray Polyurethane	M12 x 15	1.7 lbs.	42-5533-404-032-0001-0805
Directional Lock	5"	220 lbs.	Roller	Gray Polyurethane	M12 x 15	1.5 lbs.	42-5533-401-032-0001-0805

PlasTech Solus Standard Height

Type	Wheel Dia.	Load Capacity	Bearing	Wheel Type	Stem Size	Weight	Part Number
Swivel	4"	176 lbs.	Ball	Gray Polyurethane	M10 x 15	1.0 lbs.	42-4504-404-064-0001-0805
Swivel	4"	176 lbs.	Roller	Gray Polyurethane	M10 x 15	0.8 lbs.	42-4504-401-064-0001-0805
Swivel	5"	220 lbs.	Ball	Gray Polyurethane	M12 x 20	1.7 lbs.	42-5504-404-007-0001-0805
Swivel	5"	220 lbs.	Roller	Gray Polyurethane	M12 x 20	1.5 lbs.	42-5504-401-007-0001-0805
Total Lock	4"	176 lbs.	Ball	Gray Polyurethane	M10 x 15	1.2 lbs.	42-4502-404-064-2001-0805
Total Lock	4"	176 lbs.	Roller	Gray Polyurethane	M10 x 15	1.0 lbs.	42-4502-401-064-2001-0805
Total Lock	5"	220 lbs.	Ball	Gray Polyurethane	M12 x 20	2.0 lbs.	42-5502-404-007-2001-0805
Total Lock	5"	220 lbs.	Roller	Gray Polyurethane	M12 x 20	1.8 lbs.	42-5502-401-007-2001-0805
Directional Lock	5"	220 lbs.	Ball	Gray Polyurethane	M12 x 20	2.0 lbs.	42-5503-404-007-5001-0805
Directional Lock	5"	220 lbs.	Roller	Gray Polyurethane	M12 x 20	1.8 lbs.	42-5503-401-007-5001-0805

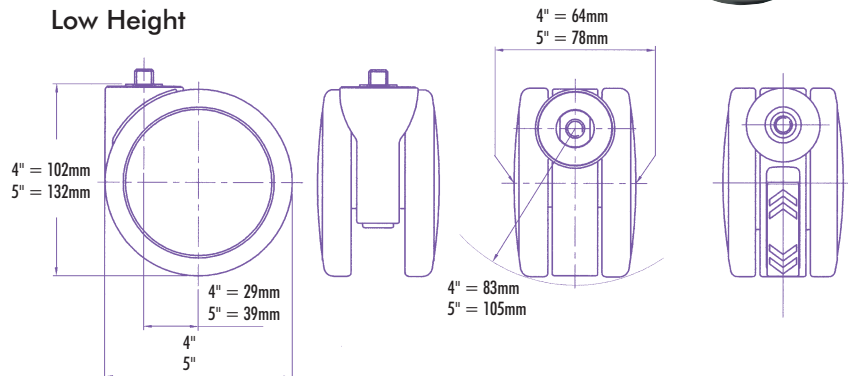
Standard Finish: Body - White RAL 9003; Polyurethane Tires - Gray RAL 7005

Options

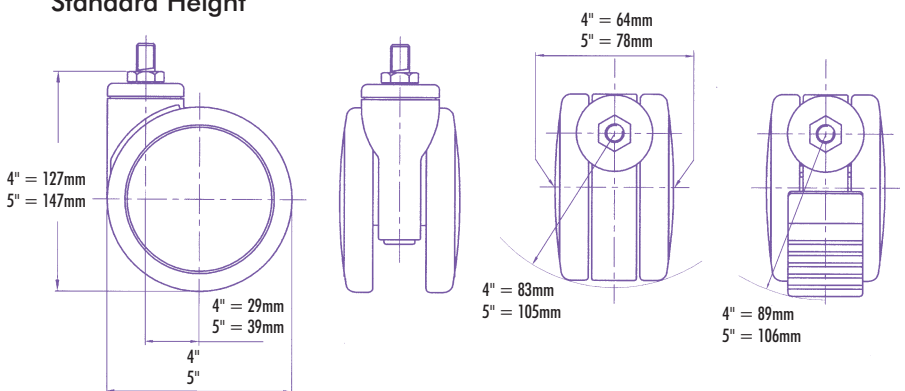
(Consult Factory)

- Alternative mounting stem and thread size
- Washable versions with durable plastic bearings and stainless steel ball bearing, pin and axle.
- Self-colored, scratch-resistant thermo-plastic parts to complement equipment
- Alternative tire material and hardness
- Removable wheels

Low Height



Standard Height



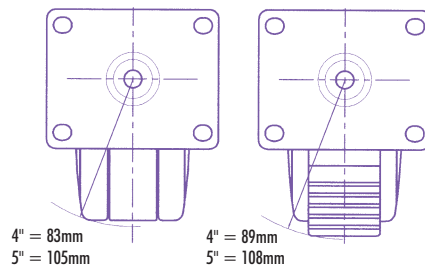
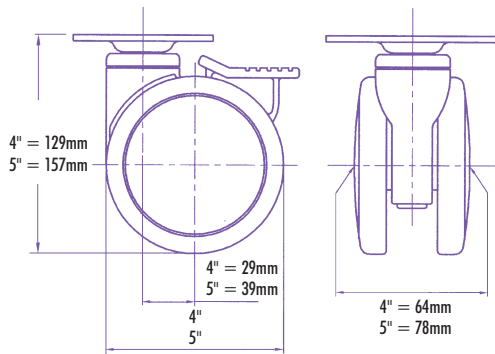
Consult factory for English/Imperial ordering dimensions and quantities.

PlasTech – Solus Top Plate Swivel Casters

PlasTech Solus Top Plate

Type	Wheel Dia.	Load Capacity	Bearing	Wheel Type	Weight	Part Number
Swivel	4"	176 lbs.	Ball	Gray Polyurethane	1.5 lbs.	42-4504-404-158-0001-0805
Swivel	4"	176 lbs.	Roller	Gray Polyurethane	1.3 lbs.	42-4504-401-158-0001-0805
Swivel	5"	220 lbs.	Ball	Gray Polyurethane	2.3 lbs.	42-5504-404-158-0001-0805
Swivel	5"	220 lbs.	Roller	Gray Polyurethane	2.1 lbs.	42-5504-401-158-0001-0805
Total Lock	4"	176 lbs.	Ball	Gray Polyurethane	1.6 lbs.	42-4502-404-158-2001-0805
Total Lock	4"	176 lbs.	Roller	Gray Polyurethane	1.5 lbs.	42-4502-401-158-2001-0805
Total Lock	5"	220 lbs.	Ball	Gray Polyurethane	2.4 lbs.	42-5502-404-158-2001-0805
Total Lock	5"	220 lbs.	Roller	Gray Polyurethane	2.2 lbs.	42-5502-401-158-2001-0805
Directional Lock	5"	220 lbs.	Ball	Gray Polyurethane	1.5 lbs.	42-5503-404-158-5001-0805
Directional Lock	5"	220 lbs.	Roller	Gray Polyurethane	1.3 lbs.	42-5503-401-158-5001-0805

Standard Finish: Body - White RAL 9003; Polyurethane Tires - Gray RAL 7005

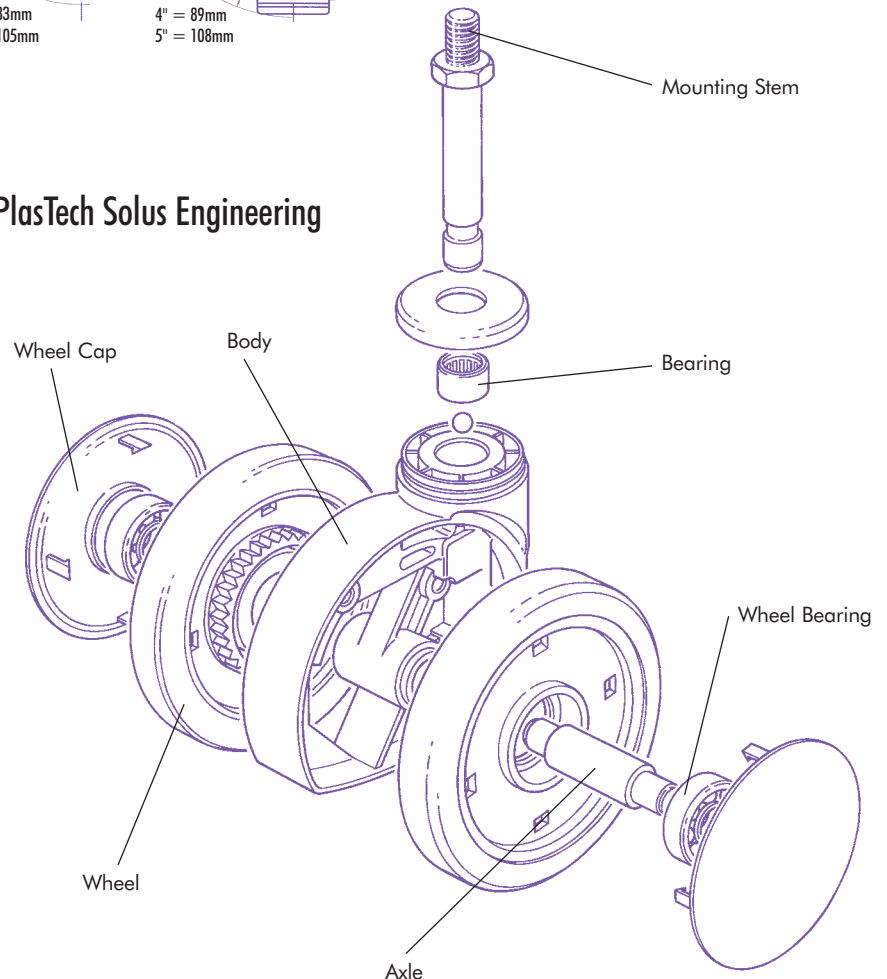


Options

(Consult Factory)

- Available with the following brake options:
 1. Wheel lock
 2. Directional lock
 3. Total lock
- Washable versions with durable plastic bearings and stainless steel ball bearing, stem and axle.
- Self-colored, scratch-resistant thermo-plastic parts to complement equipment
- Alternative tire material and hardness
- Removable wheels
- Anti-static polyurethane wheels

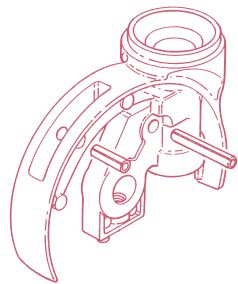
PlasTech Solus Engineering



Consult factory for English/Imperial ordering dimensions and quantities.



TwinTech Solus Specifications



Body and Wheel Centers

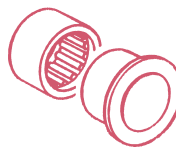
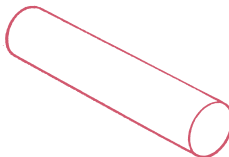
- Pressure-diecast aluminum for light weight, high load capacity, resistance to abuse, and electrical safety.
- Standard finish: epoxy coating in White RAL 9003.

Brake

- Brake mechanism enabled through diecast teeth around each wheel hub and swivel pin.

Tires

- Tire profiles to suit hard and soft floor surfaces.
- Gray rubber, or gray polyurethane, with extremely hard wearing properties for temperatures up to 176°F (80°C). Low rolling resistance and very high load capacity.
- Gray, non-marking rubber for softer ride and temperatures up to 149°F (65°C).



Axle

- Precision hardened and ground steel shaft, manufactured to exacting tolerances; provides extended service life.

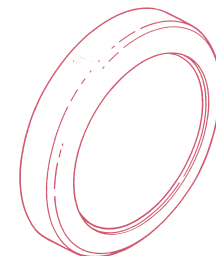
Bearings

- Headwork thrust race with hardened cup and cone ensures minimal wear and swivel resistance.
- Precision needle roller bearings fitted as standard for low rolling resistance.

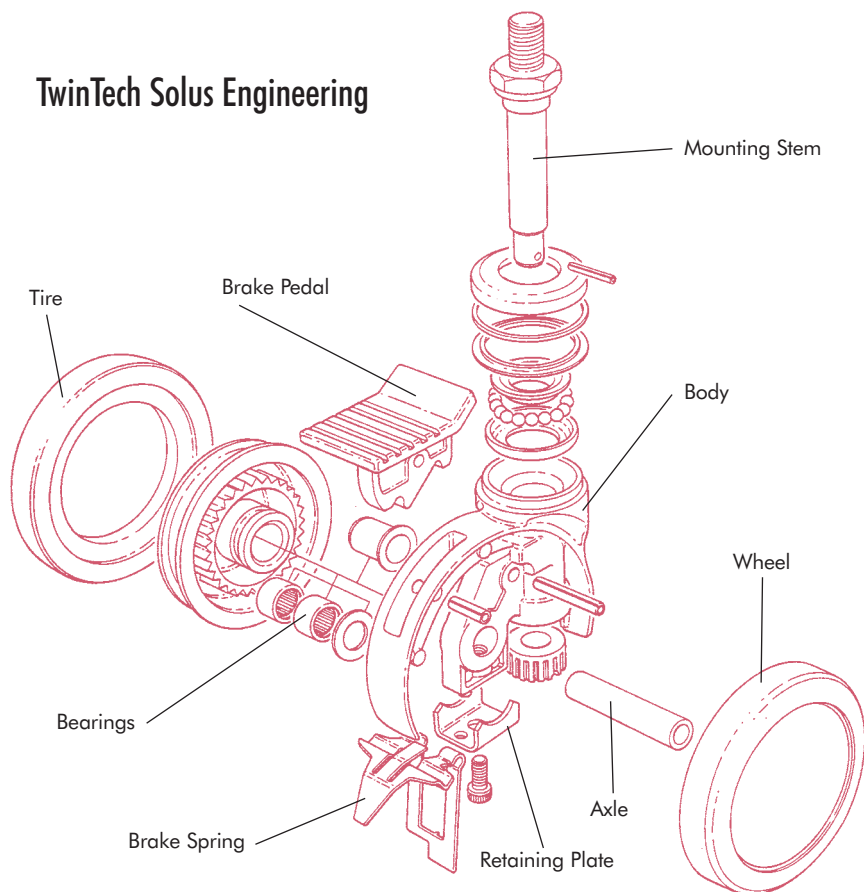
Twin Wheels

- Independent rotation allows minimal swivel effort.
- Totally enclosed bearings, swivel and brake mechanisms in minimal height housing.

Minimal wheel lubrication may be needed in extreme conditions.



TwinTech Solus Engineering



Ordering Options

- Body and wheel hubs can be powder coated in virtually any color to match existing equipment. (Consult factory for pricing and set-up charges.)
- Tires available in polyurethane, rubber, and nylon in a selection of color, shape, hardness, or electrical characteristics.
- Optional hard tread tire in black nylon for high maneuverability on suitable floors.
- Mounting stem can be customized to user's requirements.
- Special "Gold Seal" version provides 72-hour salt spray protection through special plating quality and additional seals for regular autoclaving or steam cleaning. (Consult factory for pricing and set-up charges.)
- Available with the following brake options:
 1. Wheel lock
 2. Directional lock
 3. Total lock
- Caster construction for non-magnetic characteristics.
- Anti-static rubber, nylon, or polyurethane tires.
- Delrin® bearing wheels.

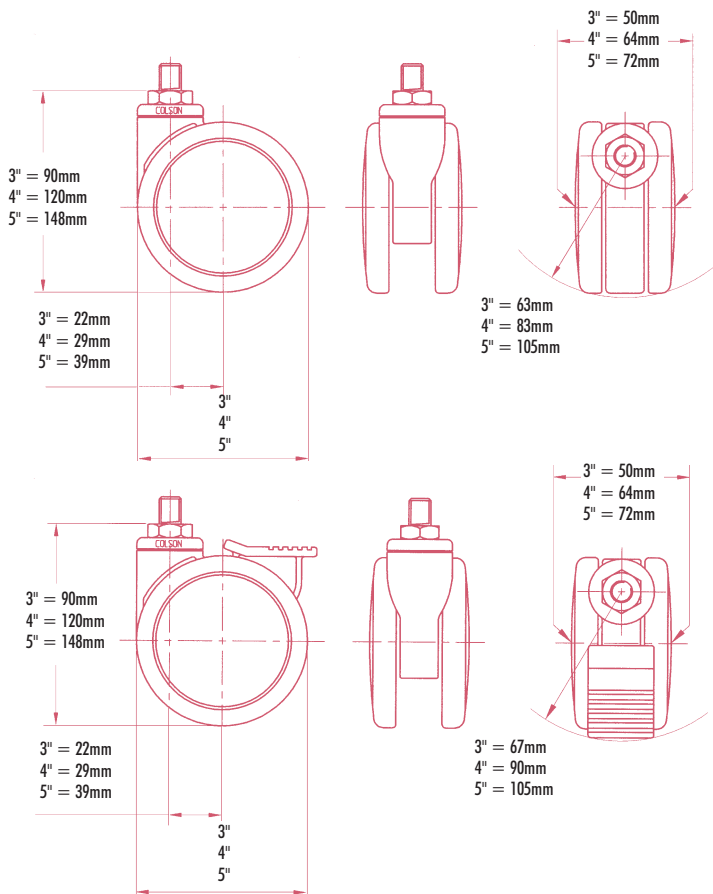
TwinTech – Solus Swivel Casters

Simple, clean lines combined with the ability to swivel freely in all directions make the TwinTech Solus Swivel Caster ideal for high-technology equipment. It features a lower overall height than traditional casters to maximize stacking capacity, or to stabilize legs which need to slide under equipment.

The Total Lock models feature a brake mechanism that is fully enclosed between the twin wheels to avoid wear on tires often associated with external brakes. The brake is activated by light pressure on a smooth-contoured pedal, manufactured from tough, reinforced thermoplastic for a low operating load and long service life. Both the wheel and the swivel are locked simultaneously by the positive engagement of two sets of metal teeth.

Type	Wheel Dia.	Load Capacity	Bearing	Wheel Type	Stem Size	Weight	Part Number
Swivel	3"	198 lbs.	Roller	Gray Polyurethane	M10 x 15	0.8 lbs.	2-3504-409-064-0001-0805
Swivel	4"	275 lbs.	Roller	Gray Polyurethane	M12 x 20	1.6 lbs.	2-4504-409-007-0001-0805
Swivel	5"	297 lbs.	Roller	Gray Polyurethane	M16 x 20	2.9 lbs.	2-5504-409-017-0001-0805
Swivel	4"	198 lbs.	Roller	Gray Rubber	M12 x 20	1.6 lbs.	2-4504-409-007-0001-0105
Swivel	5"	220 lbs.	Roller	Gray Rubber	M16 x 20	2.9 lbs.	2-5504-409-007-0001-0105
Total Lock	3"	198 lbs.	Roller	Gray Polyurethane	M10 x 15	0.9 lbs.	2-3502-409-064-2001-0805
Total Lock	4"	275 lbs.	Roller	Gray Polyurethane	M12 x 20	1.9 lbs.	2-4502-409-007-2001-0805
Total Lock	5"	297 lbs.	Roller	Gray Polyurethane	M16 x 20	3.0 lbs.	2-5502-409-017-2001-0805
Total Lock	4"	198 lbs.	Roller	Gray Rubber	M12 x 20	1.9 lbs.	2-4502-409-007-2001-0105
Total Lock	5"	220 lbs.	Roller	Gray Rubber	M16 x 20	3.0 lbs.	2-5502-409-017-2001-0105

Standard Finish: Body - White RAL 9003.



Options

(Consult Factory)

- "Gold Seal" washable casters
- Colored finishes
- Electrically conductive tires
- Alternative stem and thread sizes
- Top plate fixing
- Black nylon tires
- Directional lock for Total Lock models

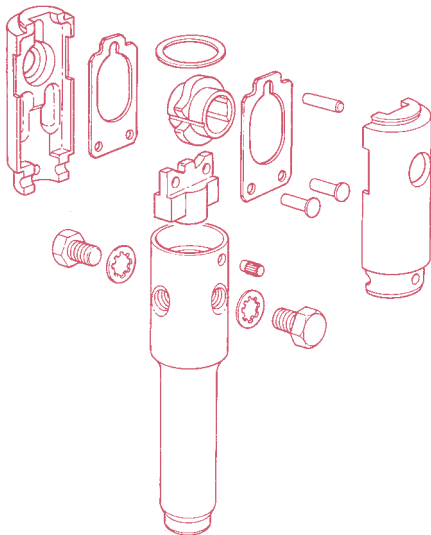
Consult factory for English/Imperial ordering dimensions and quantities.

TwinTech Combi Specifications

Cam Capsule

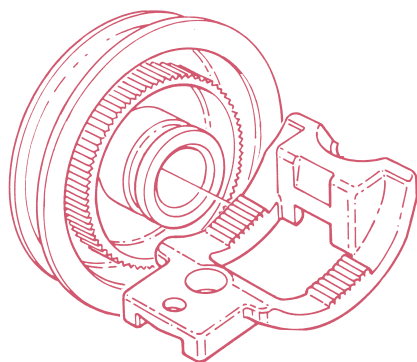
The locking mechanism is totally enclosed within the capsule. It is activated by an 11mm hexagonal drive bar, which can be set for three modes of operation:

1. Wheel and caster swivel;
2. Wheel swivel, but caster positioned in directional lock;
3. Wheel and caster total locked.



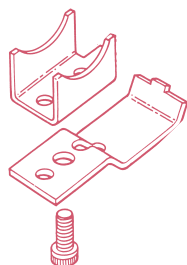
Brake

- Mechanical system with pressure-diecast teeth engaging with integral teeth cast into a wheel hub. This is a positive-locking parking brake which completely immobilizes the equipment.



Retaining Plate

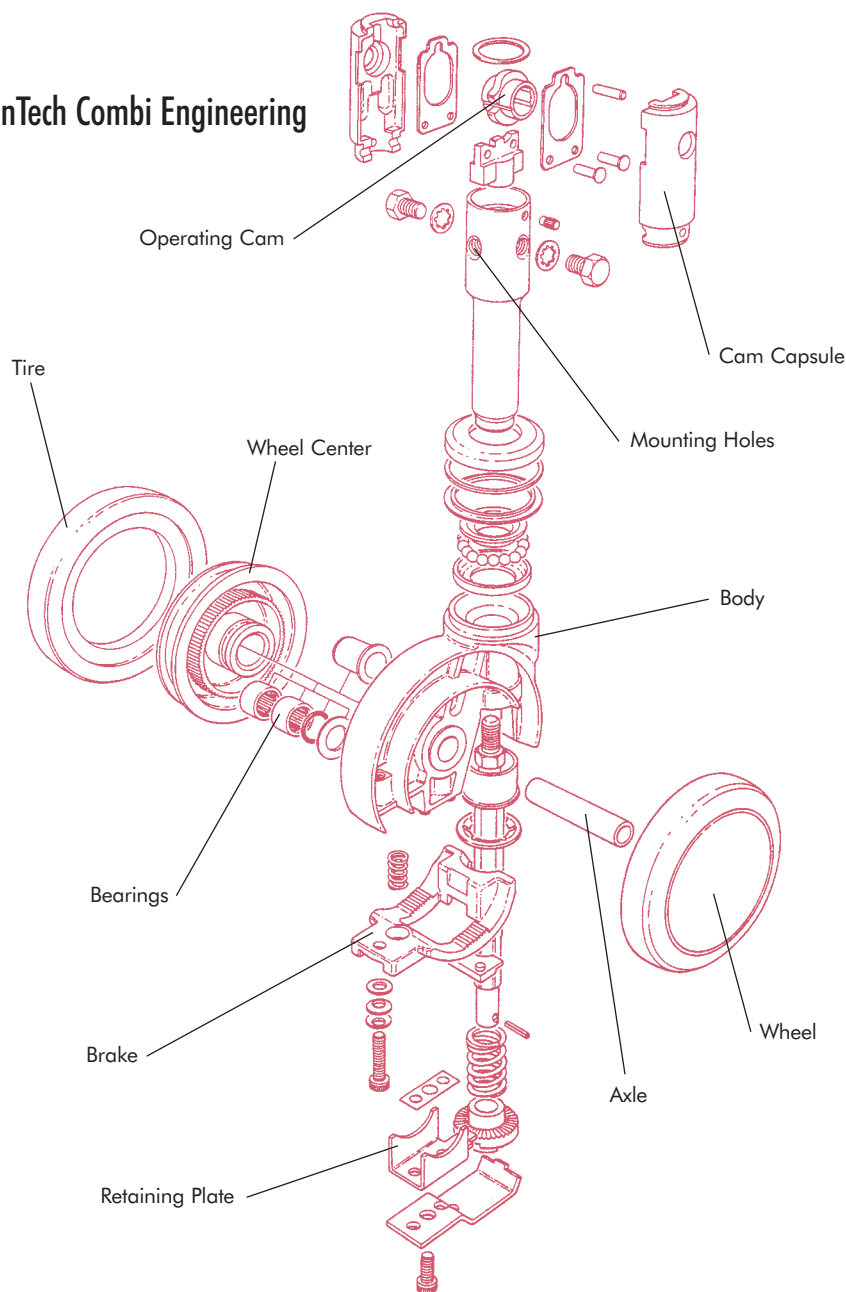
- Designed to allow quick removal and reassembly of the wheels for easy servicing.



Ordering Options

- Overall height of caster can be extended to match conventional single-wheel casters for greater ground clearance and under-trolley access.
- Alternative "D" section drive bar actuating mechanism can be specified.
- Body and wheel hubs can be powder coated in virtually any color to match existing equipment. (Consult factory for pricing and set-up charges.)
- Tires available in polyurethane, rubber, and nylon in a selection of color, shape, hardness, or electrical characteristics.
- Special "Gold Seal" version provides 72-hour salt spray protection through special plating quality, and additional seals for regular autoclaving or steam cleaning. (Consult factory for pricing and set-up charges.)

TwinTech Combi Engineering



TwinTech – Combi Total Lock Swivel Casters

TwinTech Combi Casters offer all of the design features and benefits of the TwinTech Solus models plus sophisticated braking options.

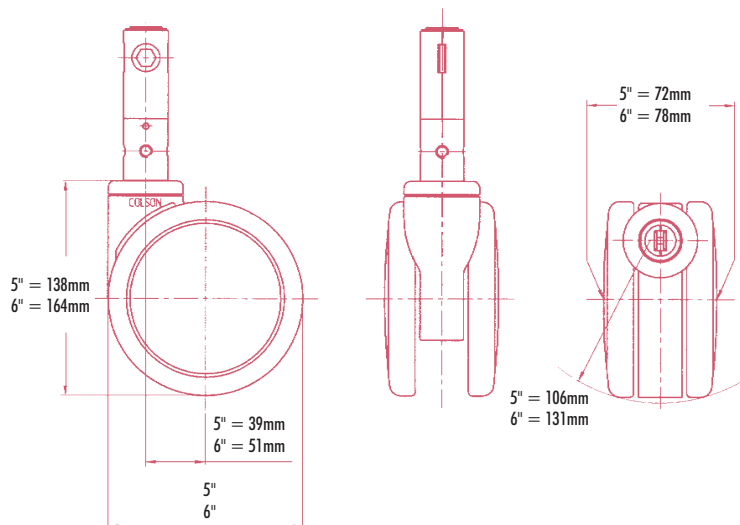
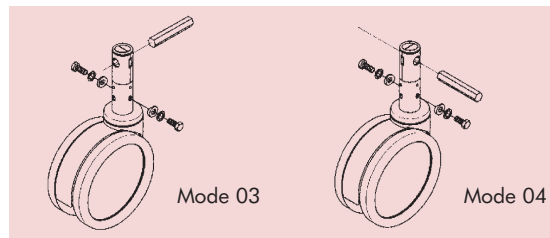
The Total Lock models feature a mechanical brake that allows the wheels to swivel and rotate freely when in the “off” position, and will prevent both swiveling and rotation when in the “on” position. The brake system uses metal teeth that engage simultaneously with complementary teeth on the wheel hub and swivel pin to immobilize the caster. This central locking system does not cause the wear on brake pads and tire surfaces common to conventional friction brakes.

The Total & Directional Lock models are ideal for the most complex applications, including hospital beds and stretchers where its twin-wheel design ensures perfect tracking down long corridors. The central locking mechanism can be locked in three distinct positions, providing free swiveling, swivel locked with wheel free, and total locking of both wheels and swivel.

Type	Wheel Dia.	Load Capacity	Bearing	Wheel Type	Weight	Part Number	Locking Position
Total Lock	5"	297 lbs.	Roller	Gray Polyurethane	3.7 lbs.	2-5512-409-002-0001-0805	
Total Lock	6"	330 lbs.	Roller	Gray Polyurethane	4.9 lbs.	2-6512-409-002-0001-0805	
Total Lock	5"	198 lbs.	Roller	Gray Rubber	3.7 lbs.	2-5512-409-002-0001-0105	
Total Lock	6"	220 lbs.	Roller	Gray Rubber	4.9 lbs.	2-6512-409-002-0001-0105	
Total & Directional Lock	5"	297 lbs.	Roller	Gray Polyurethane	3.7 lbs.	2-5513-409-003-0001-0805	Mode 03
Total & Directional Lock	6"	330 lbs.	Roller	Gray Polyurethane	4.9 lbs.	2-6513-409-003-0001-0805	Mode 03
Total & Directional Lock	5"	198 lbs.	Roller	Gray Rubber	3.7 lbs.	2-5513-409-003-0001-0105	Mode 03
Total & Directional Lock	6"	220 lbs.	Roller	Gray Rubber	4.9 lbs.	2-6513-409-003-0001-0105	Mode 03
Total & Directional Lock	5"	297 lbs.	Roller	Gray Polyurethane	3.7 lbs.	2-5513-409-004-0001-0805	Mode 04
Total & Directional Lock	6"	330 lbs.	Roller	Gray Polyurethane	4.9 lbs.	2-6513-409-004-0001-0805	Mode 04
Total & Directional Lock	5"	198 lbs.	Roller	Gray Rubber	3.7 lbs.	2-5513-409-004-0001-0105	Mode 04
Total & Directional Lock	6"	220 lbs.	Roller	Gray Rubber	4.9 lbs.	2-6513-409-004-0001-0105	Mode 04

Standard Finish: Body - White RAL 9003.

See page 3 for typical Combi configurations in Mode 03 and Mode 04



Options

(Consult Factory)

- “Gold Seal” washable casters
- “D” cam mounting
- Longer mounting stems available
- Colored finishes
- Electrically conductive tires
- Non-magnetic casters
- Black nylon tires

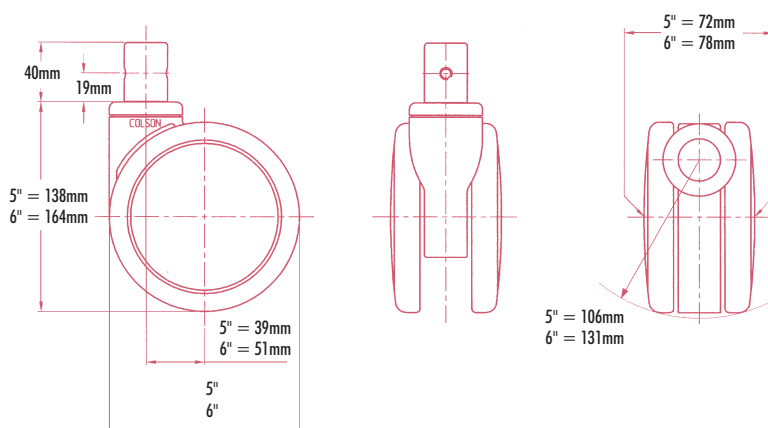
Consult factory for English/Imperial ordering dimensions and quantities.

TwinTech – Combi Swivel Casters

TwinTech Combi Casters feature a head-bearing design that allows 360-degree swiveling with complete freedom. Since its overall dimensions are identical to others in the range, these Combi models can be used in combination with other types of Combi casters. This model also can be supplied in a non-swiveling, guiding caster version.

Type	Wheel Dia.	Load Capacity	Bearing	Wheel Type	Weight	Part Number
Swivel	5"	298 lbs.	Roller	Gray Polyurethane	2.9 lbs.	2-5514-409-001-0001-0805
Swivel	6"	330 lbs.	Roller	Gray Polyurethane	4.9 lbs.	2-6514-409-001-0001-0805
Swivel	5"	198 lbs.	Roller	Gray Rubber	2.9 lbs.	2-5514-409-001-0001-0105
Swivel	6"	220 lbs.	Roller	Gray Rubber	4.9 lbs.	2-6514-409-001-0001-0105

Standard Finish: Body - White RAL 9003.



Options

(Consult Factory)

- "Gold Seal" washable casters
- Longer mounting stems available
- Colored finishes
- Electrically conductive tires
- Non-magnetic casters
- Black nylon tires

Consult factory for English/Imperial ordering dimensions and quantities.



TwinTech – Combi Plunger Lock Casters

TwinTech Combi Plunger Lock Casters are designed to immobilize equipment quickly and easily. They offer the streamlined contours, exceptional maneuverability, and wide range of available materials and finishes standard with the TwinTech range. No adjustments or maintenance are required as the casters will provide a long life of positive operation and reliability. The plunger pad is made of soft, non-marking rubber for maximum friction resistance.

Type	Wheel Dia.	Load Capacity	Bearing	Wheel Type	Weight	Part Number
Plunger Lock	5"	298 lbs.	Roller	Gray Polyurethane	3.2 lbs.	2-5545-409-001-0001-0805
Plunger Lock	6"	330 lbs.	Roller	Gray Polyurethane	4.0 lbs.	2-6545-409-001-0001-0805
Plunger Lock	5"	198 lbs.	Roller	Gray Rubber	3.2 lbs.	2-5545-409-001-0001-0105
Plunger Lock	6"	220 lbs.	Roller	Gray Rubber	4.0 lbs.	2-6545-409-001-0001-0105

Standard Finish: Body - White RAL 9003.

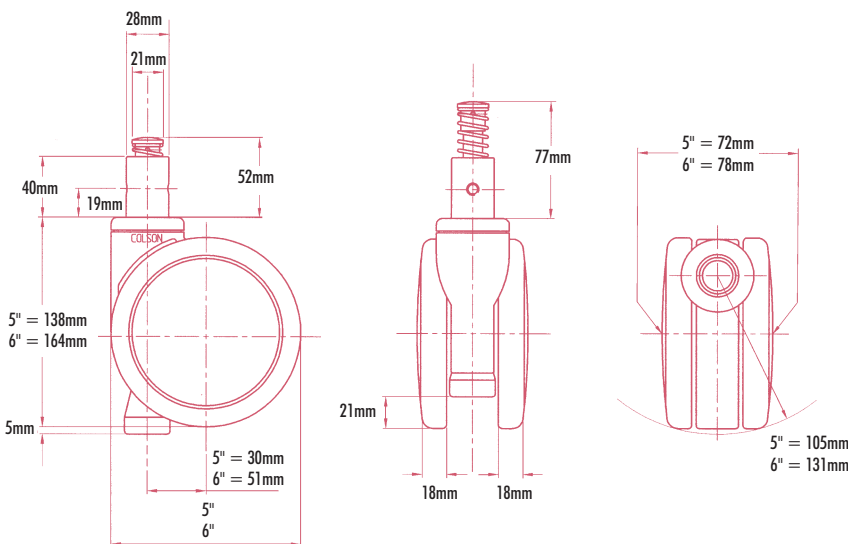
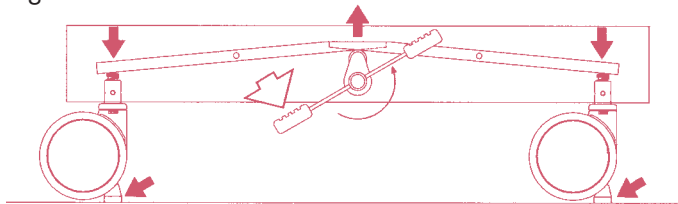


Figure 1



A single mechanism, housed within the equipment, drives the caster's integral plunger - lock down through the caster body, lifting the wheels clear of the floor. (Figure 1 above)

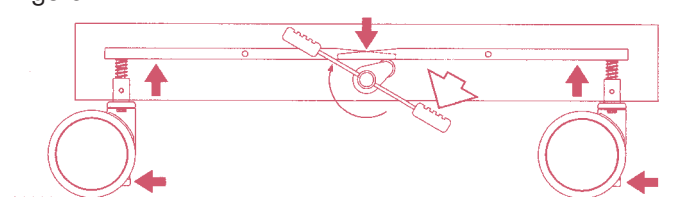


The mechanism also can be designed to immobilize the equipment while keeping the wheels in contact with the floor.



When the plunger lock is released, the equipment moves freely. (Figure 2 above)

Figure 2



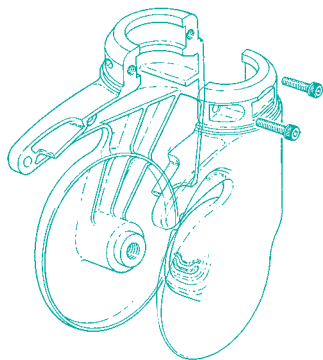
Options

(Consult Factory)

- "Gold Seal" washable casters
- Colored finishes
- Electrically conductive tires
- Black nylon tires

Consult factory for English/Imperial ordering dimensions and quantities.

SingleTech Solus Specifications

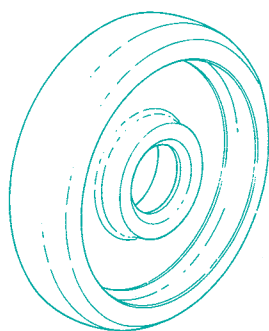


Body and Wheel Centers

- Material chosen for light-weight, high load capacity, resistance to abuse, electrical safety and finish characteristics.
- Body consists of two pressure-diecast aluminum shells.
- Wheel center is pressure-diecast zinc alloy or nylon.

Tires

- Polyurethane and rubber.
- All tires are molded and mechanically locked onto the wheel center.
- Tire profiles to suit hard and soft floor surfaces.
- Gray polyurethane with extremely hard wearing properties for temperatures up to 176°F (80°C). Low rolling resistance and very high load capacity. Hardness 90° Shore A.
- Gray, non-marking rubber for softer ride and temperatures up to 149°F (65°C). Hardness 65° Shore A.



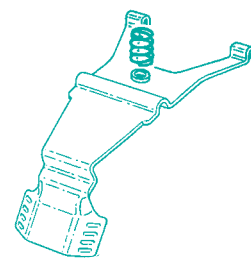
Bearings

- Sealed precision ball bearings are fitted as standard to headwork and wheel, ensuring high dynamic performance and low rolling resistance.



Brake

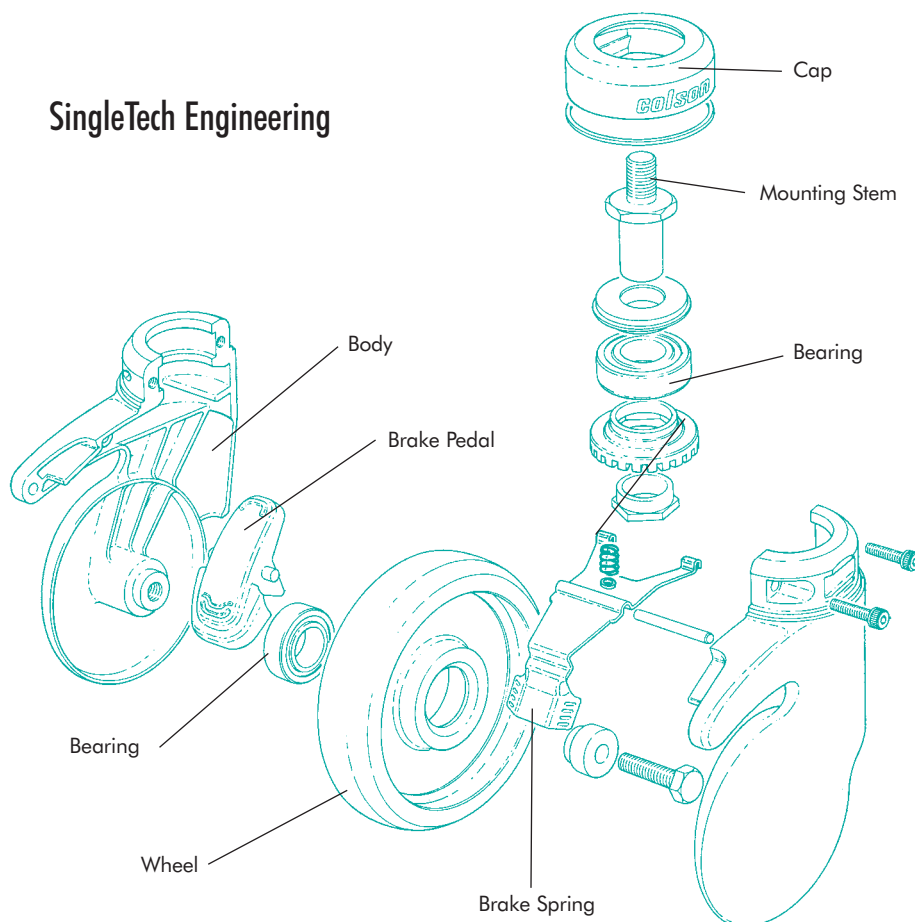
- A progressive brake mechanism grips the flanks of the tires without affecting the tread of the wheel, thus reducing tire wear.



Maintenance

- Minimal wheel lubrication may be needed in extreme conditions.
- The design makes it virtually impossible for dirt to penetrate; however, an inventive sliding top cover reveals mounting bolts. This frees one shell for easy cleaning or maintenance, if required, with the caster still in service.

SingleTech Engineering



Ordering Options

- Body and wheel hubs can be powder coated in virtually any color to match existing equipment. (Consult factory for pricing and set-up charges.)
- Epoxy powder coating is available to meet application requirements.
- Polyurethane tires can be molded in a selection of color, hardness, or electrical characteristics. Standard color - gray.
- Non-staining rubber tires can be molded in a selection of hardness or electrical characteristics. Standard color - gray.
- Special "Gold Seal" version provides 72-hour salt spray protection through special plating quality and additional seals, for regular autoclaving or steam cleaning. (Consult factory for pricing and set-up charges.)
- Available with the following brake options:
 1. Wheel lock
 2. Directional lock
 3. Total lock
- Caster construction for non-magnetic characteristics.
- Anti-static rubber, nylon, or polyurethane tires.

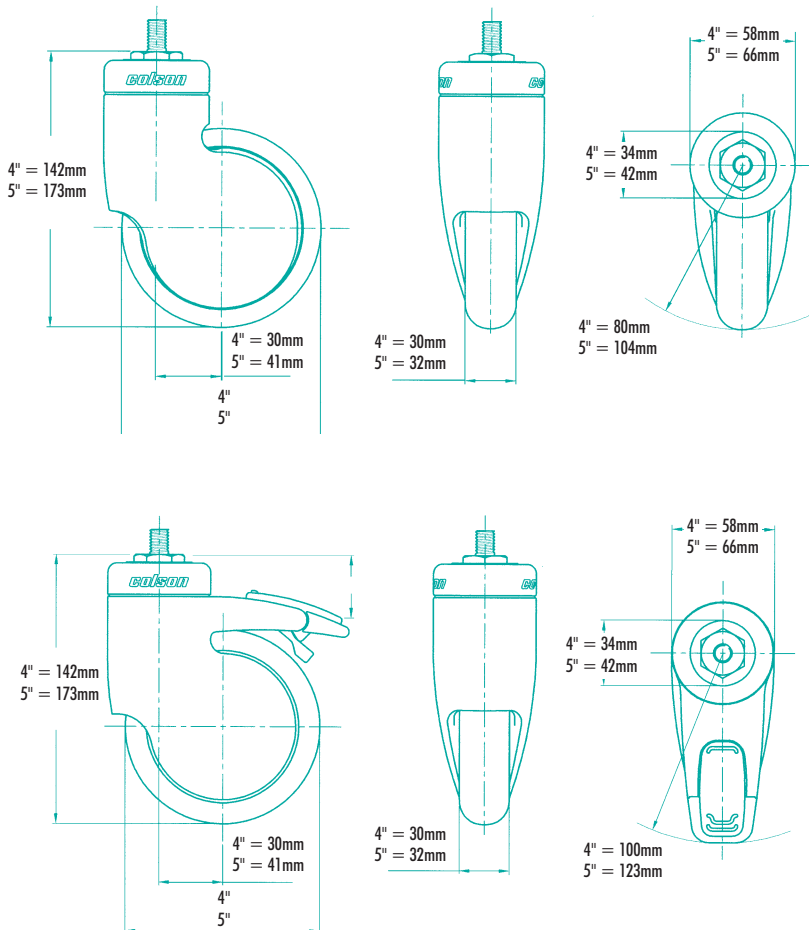
SingleTech – Solus Swivel Casters

SingleTech Swivel Casters feature aesthetic clean lines and a choice of available colors. They are manufactured from two pressure-diecast aluminum shells and combine light weight with high load capacities. Combined with the ability to swivel freely in all directions, these casters are ideal for modern technical equipment.

The Total Lock models offer both the high overall height and a highly effective brake mechanism enclosed between two shells. The brake is activated by light pressure on a smooth-contoured pedal. Both the wheel and swivel are locked simultaneously.

Type	Wheel Dia.	Load Capacity	Bearing	Wheel Type	Stem Size	Weight	Part Number
Swivel	4"	275 lbs.	Ball	Gray Polyurethane	M10 x 15	1.5 lbs.	2-4404-404-064-0001-0805
Swivel	5"	297 lbs.	Ball	Gray Polyurethane	M12 x 20	2.5 lbs.	2-5404-404-007-0001-0805
Swivel	4"	198 lbs.	Ball	Gray Rubber	M10 x 15	1.5 lbs.	2-4404-404-064-0001-0105
Swivel	5"	220 lbs.	Ball	Gray Rubber	M12 x 20	2.5 lbs.	2-5404-404-007-0001-0105
Total Lock	4"	275 lbs.	Ball	Gray Polyurethane	M10 x 15	1.7 lbs.	2-4402-404-064-2001-0805
Total Lock	5"	297 lbs.	Ball	Gray Polyurethane	M12 x 20	2.9 lbs.	2-5402-404-007-2001-0805
Total Lock	4"	198 lbs.	Ball	Gray Rubber	M10 x 15	1.7 lbs.	2-4402-404-064-2001-0105
Total Lock	5"	220 lbs.	Ball	Gray Rubber	M12 x 20	2.9 lbs.	2-5402-404-007-2001-0105

Standard Finish: Body - White RAL 9003.



Options

(Consult Factory)

- "Gold Seal" washable casters
- Alternative mounting stem and thread sizes
- Colored finishes
- Electrically conductive tires

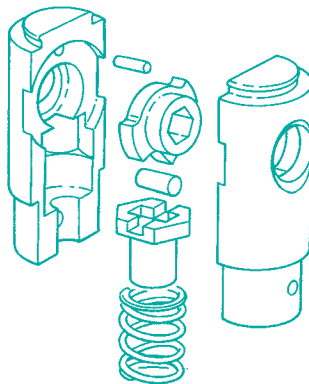
Consult factory for English/Imperial ordering dimensions and quantities.

SingleTech Combi Specifications

Cam Capsule

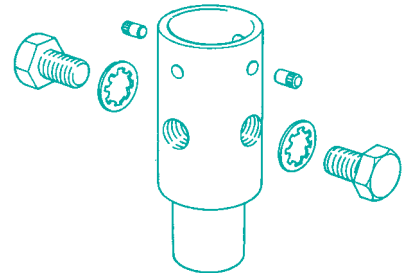
The directional and locking mechanism is totally enclosed with the capsule. To distinguish the Total Lock Caster from the Directional Lock Caster, the capsule is colored black/blue respectively. The mechanism is activated by an 11mm hexagonal drive bar, which can be set for three modes of operation:

1. Wheel and caster swivel;
2. Wheel swivel, but caster positioned in directional lock;
3. Wheel and caster total locked.



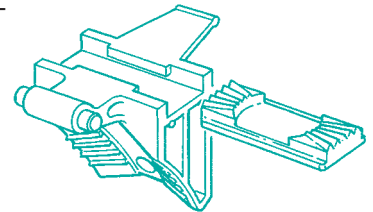
Mounting Holes

- Four threaded mounting holes are provided for maximum versatility in positioning the casters, and to minimize stocking requirements.

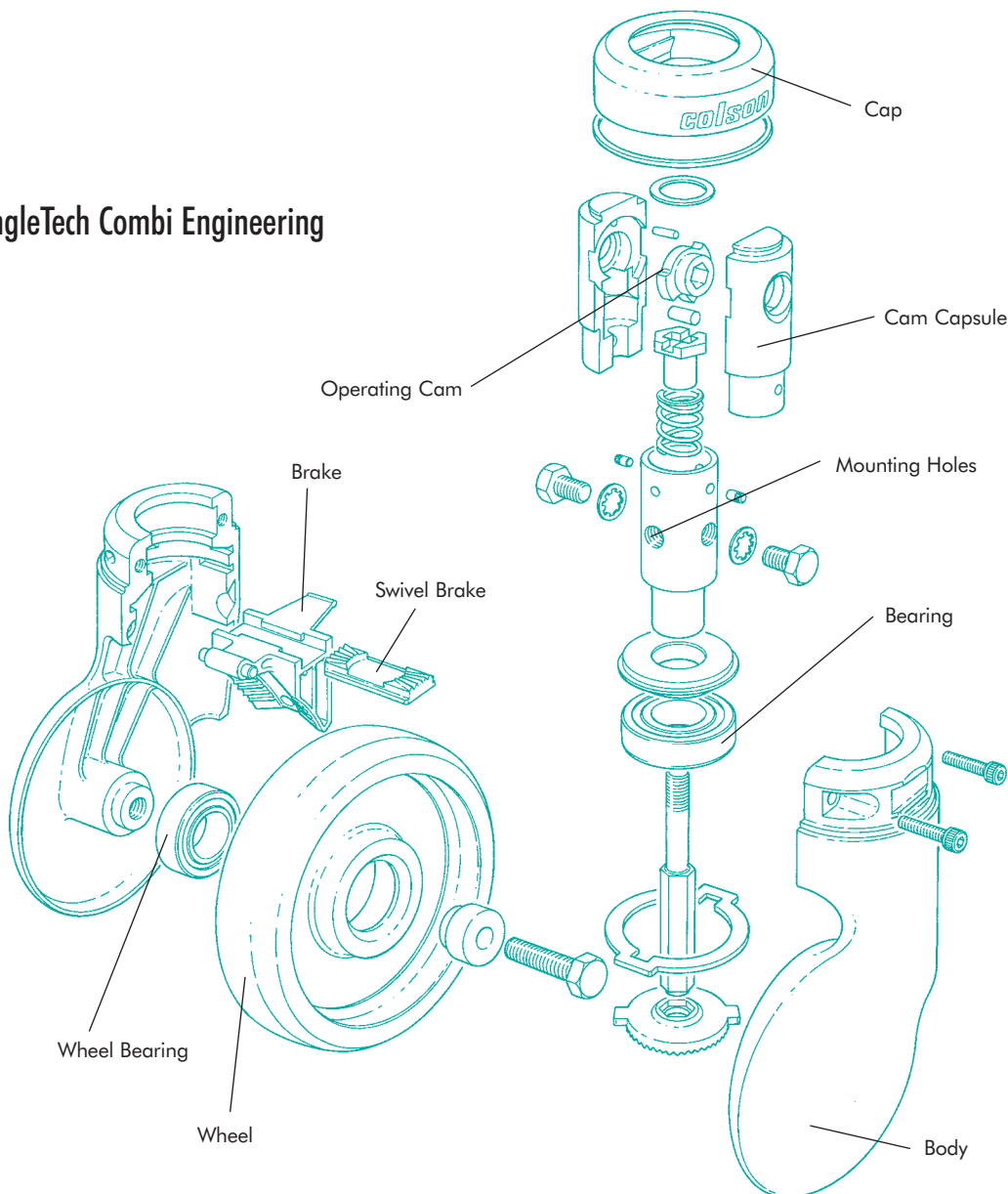


Brake

- A progressive brake mechanism grips the flanks of the tires without affecting the tread of the wheel.



SingleTech Combi Engineering



SingleTech – Combi Total Lock Swivel Casters

SingleTech Combi Casters offer all of the design features and benefits of the SingleTech Solus models plus sophisticated braking options.

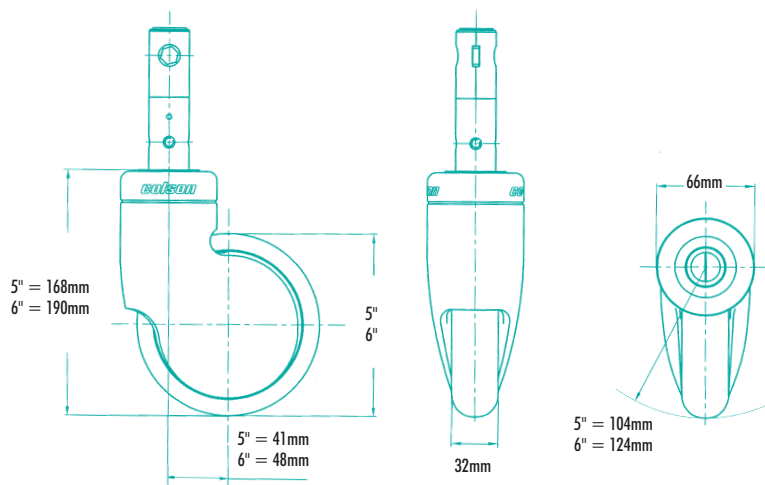
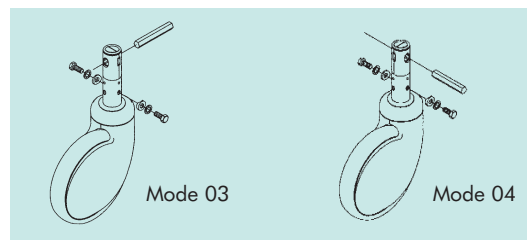
The Total Lock models feature a progressive brake mechanism that allows the wheels to swivel and rotate freely when in the “off” position, and will prevent both swiveling and rotation when in the “on” position. The brake system uses metal teeth that engage simultaneously with complementary teeth on the wheel hub and swivel pin to immobilize the caster. This central locking system does not cause the wear on brake pads and tire surfaces common to conventional friction brakes.

The Total & Directional Lock models are ideal for the most complex applications, including hospital beds and stretchers where its special design ensures perfect tracking down long corridors. The central locking mechanism can be locked in three distinct positions, providing free swiveling, swivel locked with wheel free, and total locking of both wheels and swivel.

Type	Wheel Dia.	Load Capacity	Bearing	Wheel Type	Weight	Part Number	Locking Position
Total Lock	5"	297 lbs.	Ball	Gray Polyurethane	3.3 lbs.	2-5412-404-002-0001-0805	
Total Lock	6"	330 lbs.	Ball	Gray Polyurethane	3.3 lbs.	2-6412-404-002-0001-0805	
Total Lock	5"	198 lbs.	Ball	Gray Rubber	3.9 lbs.	2-5412-404-002-0001-0105	
Total Lock	6"	220 lbs.	Ball	Gray Rubber	3.9 lbs.	2-6412-404-002-0001-0105	
Total & Directional Lock	5"	297 lbs.	Ball	Gray Polyurethane	3.3 lbs.	2-5413-404-003-0001-0805	Mode 03
Total & Directional Lock	6"	330 lbs.	Ball	Gray Polyurethane	3.9 lbs.	2-6413-404-003-0001-0805	Mode 03
Total & Directional Lock	5"	198 lbs.	Ball	Gray Rubber	3.3 lbs.	2-5413-404-003-0001-0105	Mode 03
Total & Directional Lock	6"	220 lbs.	Ball	Gray Rubber	3.9 lbs.	2-6413-404-003-0001-0105	Mode 03
Total & Directional Lock	5"	297 lbs.	Ball	Gray Polyurethane	3.3 lbs.	2-5413-404-004-0001-0805	Mode 04
Total & Directional Lock	6"	330 lbs.	Ball	Gray Polyurethane	3.9 lbs.	2-6413-404-004-0001-0805	Mode 04
Total & Directional Lock	5"	198 lbs.	Ball	Gray Rubber	3.3 lbs.	2-5413-404-004-0001-0105	Mode 04
Total & Directional Lock	6"	220 lbs.	Ball	Gray Rubber	3.9 lbs.	2-6413-404-004-0001-0105	Mode 04

Standard Finish: Body - White RAL 9003.

See page 3 for typical Combi configurations in Mode 03 and Mode 04



Options

(Consult Factory)

- “Gold Seal” washable casters
- “D” cam mounting
- Colored finishes
- Electrically conductive tires

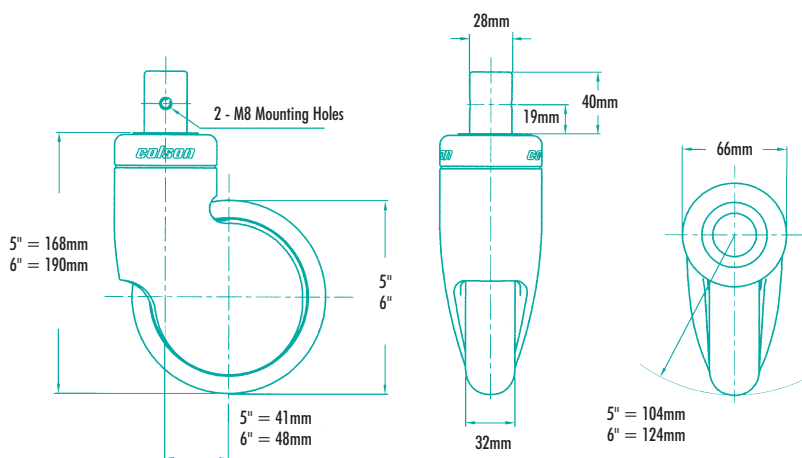
Consult factory for English/Imperial ordering dimensions and quantities.

SingleTech – Combi Swivel Casters

SingleTech Combi Casters feature a head-bearing design that allows 360-degree swiveling with complete freedom. Since its overall dimensions are identical to others in the range, these Combi models can be used in combination with other types of Combi casters.

Type	Wheel Dia.	Load Capacity	Bearing	Wheel Type	Weight	Part Number
Swivel	5"	298 lbs.	Ball	Gray Polyurethane	3.3 lbs.	2-5414-404-001-0001-0805
Swivel	6"	330 lbs.	Ball	Gray Polyurethane	3.3 lbs.	2-6414-404-001-0001-0805
Swivel	5"	198 lbs.	Ball	Gray Rubber	3.9 lbs.	2-5414-404-001-0001-0105
Swivel	6"	220 lbs.	Ball	Gray Rubber	3.9 lbs.	2-6414-404-001-0001-0105

Standard Finish: Body - White RAL 9003.

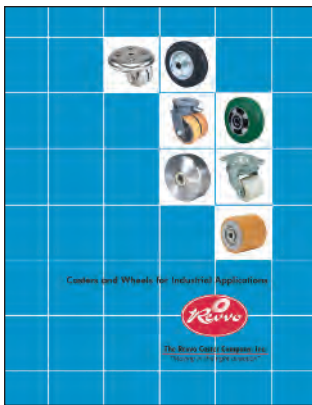


Options

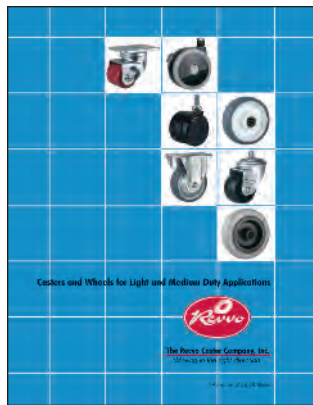
(Consult Factory)

- "Gold Seal" washable casters
- Colored finishes
- Electrically conductive tires

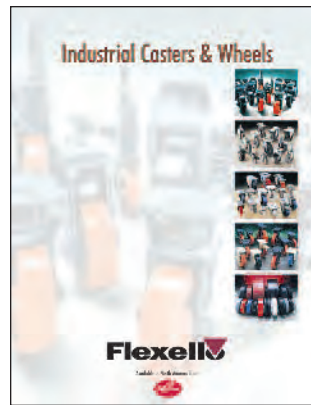
Consult factory for English/Imperial ordering dimensions and quantities.



Complete line of industrial casters and wheels from Revvo



Global and British Castor products included in the Revvo line



Flexello line of casters and wheels from Revvo



Casters and Wheels for Industrial and Institutional Applications

As part of a specialized group of companies worldwide, Revvo Caster offers an unmatched selection of casters and wheels for virtually any original equipment, replacement part, or other material handling application. We design and manufacture to strict ISO 9001 standards to help assure quality and dependability.

For more information or a copy of any of our catalogs, call toll-free 1-888-883-3596 or visit www.RevvoCaster.com



The Revvo Caster Company, Inc.

"Moving in the right direction"



British Castors Limited





Available from:



The Revvo Caster Company, Inc.
2420 North America Drive
West Seneca, NY 14224

In Canada:
P.O. Box 236
Fort Erie, ON L2A 5M9

Phone: 716-675-9609
Fax: 716-677-2363
TOLL-FREE: 1-888-883-3596
E-Mail: info@revvocaster.com
www.RevvoCaster.com



A COLSON ASSOCIATE

Distributed by: